

640 ACRES CRP LAND FOR SALE Kiowa County, Colorado

LOCATION: 4 miles west of Haswell, Colorado. Please see location map.

TRACT #1.

LEGAL DESCRIPTION: E ½ of Section 8, Township 19 South, Range 52 West of the 6th P.M.

LOCATION FROM HASWELL, CO: 3 miles west on Hwy 96, 2 ¼ mile south on Road 16. Easement to subject property on north side and along south boundary of Section 9, Township 19, Range 52

ASSESSED ACRES: 320

FSA INFORMATION:

CRP Contract #10220; Contract Period: 10-1-2012 to 9-30-2022; Acres Enrolled: 315.3; Rental Rate Per Acre: \$31.61; Annual Payment: \$9,967.00; 2016 and all years payments thereafter goes to the buyer.

MINERALS: Approximately 40 acres minerals with the surface.

TAXES: \$412.37

TRACT #2.

LEGAL DESCRIPTION: SW ¼ OF Section 28 and the SE ¼ Section 29, Township 18 South, Range 52 West of the 6th P.M.

LOCATION FROM HASWELL, CO: in Haswell, CO at the corner of Roads 19 and P 3 ½ miles west on Road P

ASSESSED ACRES: 320

FSA INFORMATION:

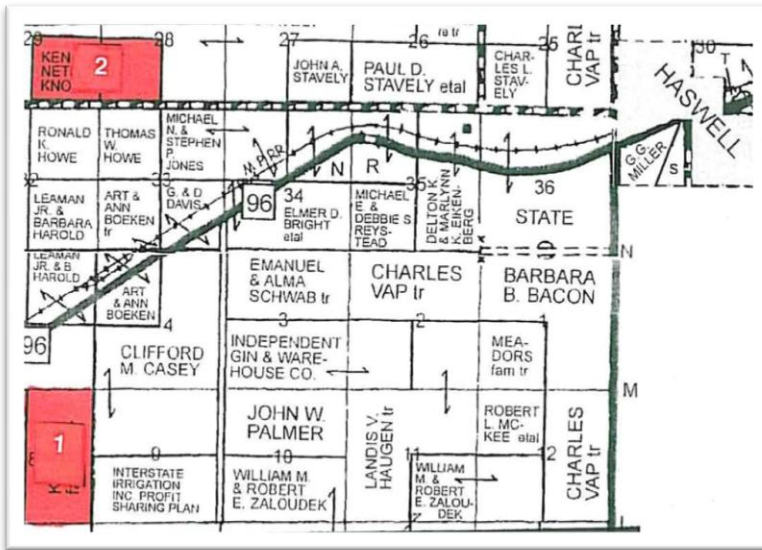
CRP Contract #1422; Contract Period: 10-1-2010 to 9-30-2020; Enrolled Acres: 298.8; Rental Rate Per Acre: \$19.95; Annual Payment: \$5,961.00

MINERALS: Approximately 20 acres with the surface

TAXES: \$411.54

LISTED PRICE: Contact Broker

POSSESSION: At closing



BROKERS NOTE:

Farmer-Stockman Realty and Auction, LLP makes no warranties or guarantees. All acreages and boundaries are considered to be approximate. Property is sold subject to all easements, restrictions and rights of ways. Buyers, as the successors to the CRP program, must comply with all U.S. Government and FSA rules and regulations.

CONTACT:



**FARMER-STOCKMAN
REALTY & AUCTION, LLP**
Under all is land, our professionals will lend you a hand.
30876 County Road 19 - Granada, CO 81041
Phone (719) 336-2675

FARMS - RANCHES - RESIDENTIAL

Larry J. Lusher, Real Estate Broker & Colorado Champion Auctioneer
Susan A. Lusher, Associate Real Estate Broker

Licensed Real Estate Brokers in Colorado and Kansas



www.farmer-stockman.com
Email: cty92217@centurytel.net